


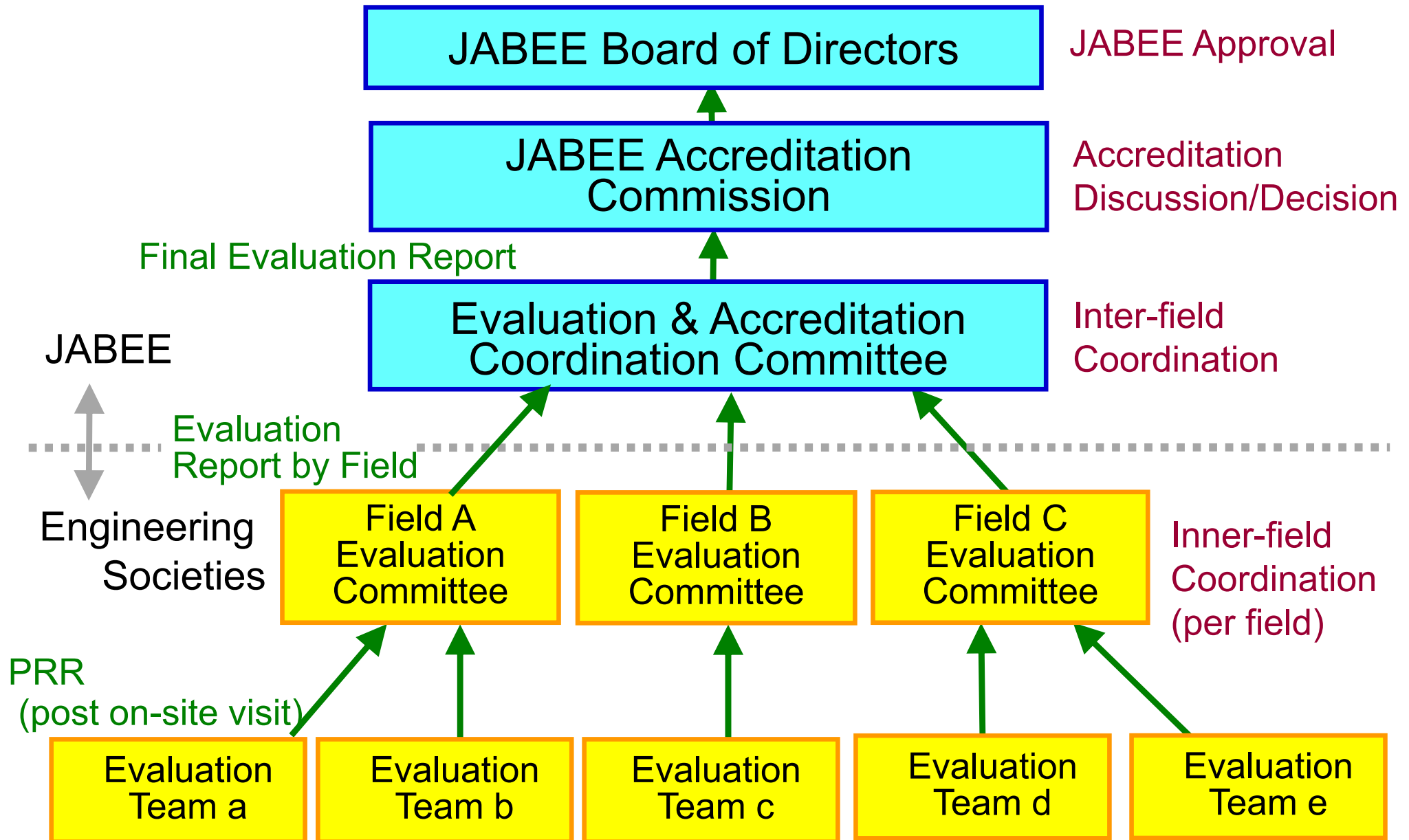
Fundamental Concept of JABEE Evaluation and Accreditation

- JABEE evaluation and accreditation is to confirm the engineering educational program which applied for evaluation and accreditation continuously meet requirements of JABEE Criteria and quality of the engineering education program which higher education institution publicized to the society is ensured based on the evidence.
- JABEE confirms system and rules to ensure appropriate future operation of the educational program and confirms evidence to prove operational history and possibility which can be determined for effective and appropriate operation.
- Term of validity of the accreditation is granted based on the applicability of the Criteria evaluated at the maximum of six years, however term of accreditation may be shortened depending on applicability.

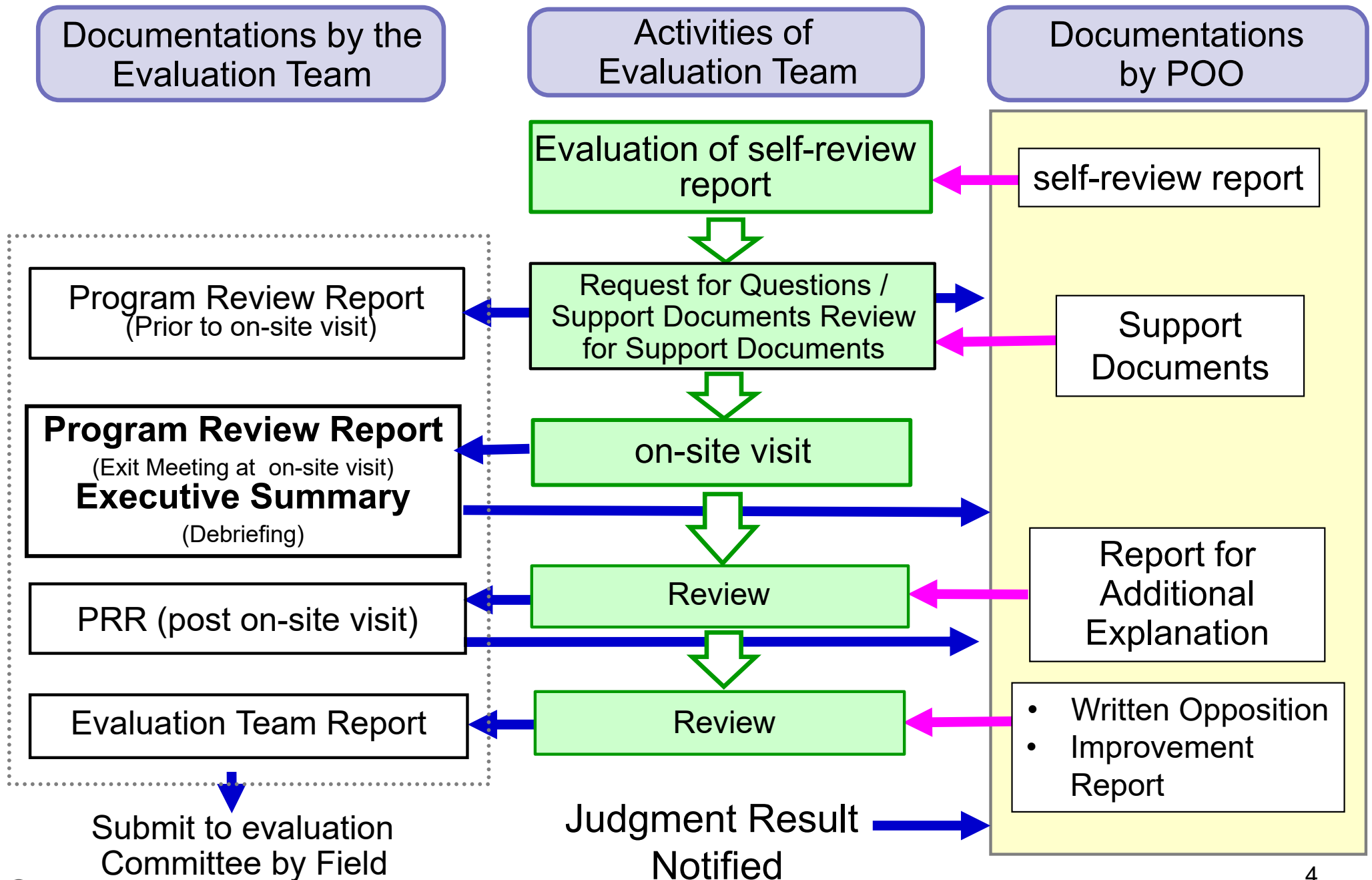
Evaluation & Accreditation Process

- 
- | | |
|----------------|---|
| Until March 31 | - Reception of application for program evaluation |
| April - June | - Composition of evaluation team |
| End of June | - Reception of self-review report from the program |
| July - Sept. | - Evaluation based on the self-review report |
| Sept. - Nov. | - On-site Visit |
| Oct. - Dec. | - Program Review Report (Post On-site Visit) & Evaluation Team Report |
| Dec. - Jan. | - Evaluation committee by the field |
| February | - Evaluation & Accreditation Coordination Committee |
| February | - Accreditation Commission |
| Early March | - JABEE Board of Directors |
| March - April | - Delivering the report of evaluation & accreditation to the program |

Coordination and Accreditation of Evaluation Result



Workflow of Evaluation Team



Judgment of Applicability to the Accreditation Criteria

(1) Satisfy (S)

Review Item or Large Category of Review meets Accreditation Criteria.

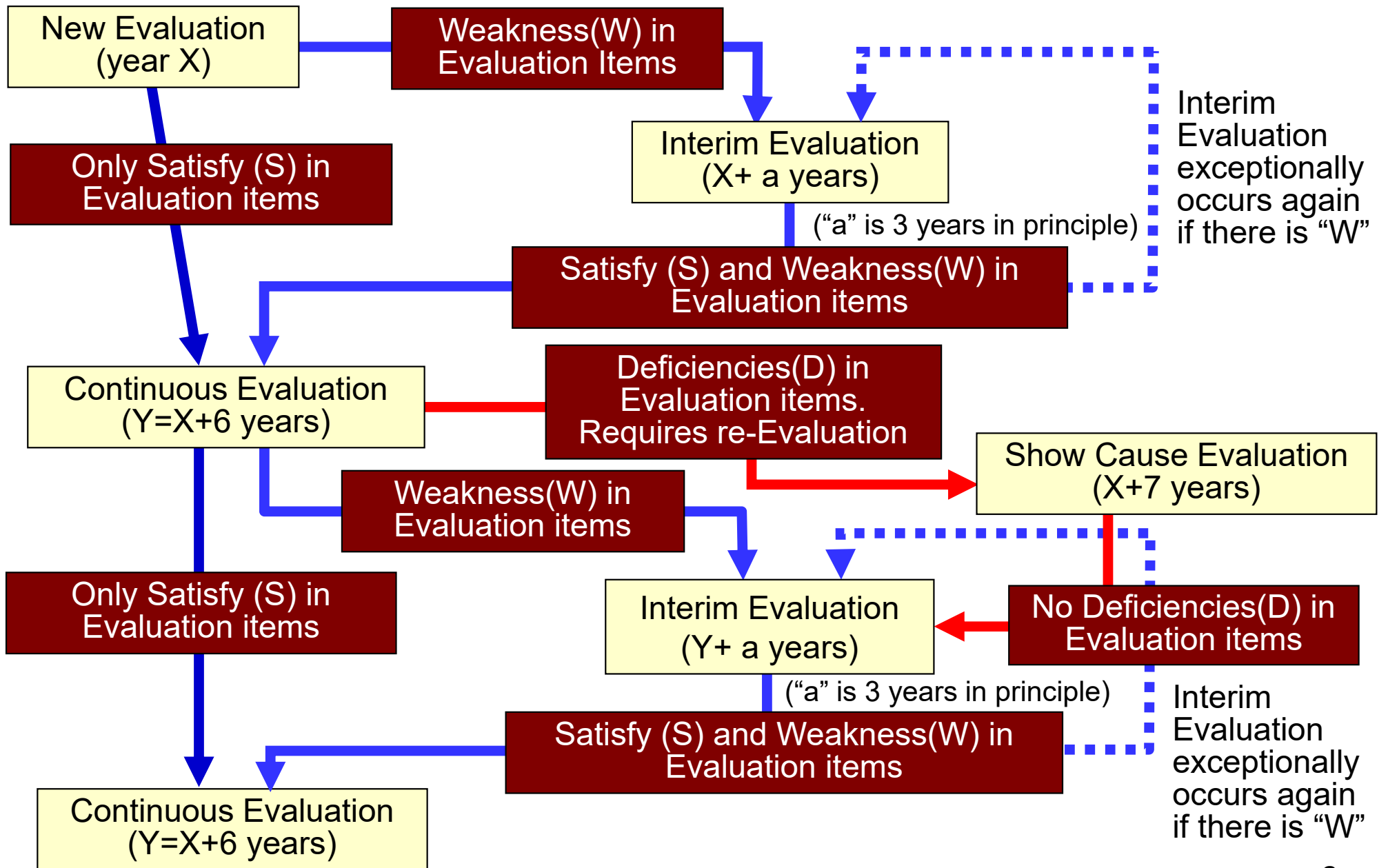
(2) Weakness (W)

Mostly meets evaluation item or large category of review although immediate remedy requires to enhance the degree of accordance to the Accreditation Criteria. The program needs to enhance and accelerate further continuous improvement

(3) Deficiency (D)

The evaluation item or large category of review does not meet the Accreditation Criteria. The program is determined as not in accordance with the Accreditation Criteria, if “D” is included in the large category of review.

Relationship among each Evaluation



Flow of the Evaluation

Prior to Visit

- Evaluation Based on the Self-review Report and supporting data
- Coordination and Inquiries with the Program

Program Review Report
(Prior to on-site visit)

Assumed to be 2 nights and 3 days.
Preliminarily decide to shorten schedule if possible

On-site Visit

- Evaluation Team Meeting at night before the on-site visit
- Interview with related parties & investigation of documents
- Evaluation Team Meeting at the first night of evaluation
- Interview with related party & investigation of documents (if there is any)
- Evaluation Team Meeting in the afternoon of second day
- Final Interview of on-site visit (debriefing, hand in PRR)

Executive Summary
(Only reading out)

PRR (Exit Meeting at On-site Visit)

Post Visit

- Responding report for additional explanation
- Responding Written Opposition and Improvement Report
- Preparation and Submission of Evaluation Team Report

PRR (Post On-site Visit)

Evaluation Team Report